



Ohio Association for Adult and Continuing Education

News & Views

PMB 103

1601 West Fifth Street

Columbus, Ohio 43212

866-99-OAACE

December 2003

Inside this issue:

Nominations Needed	1
GED Accommodations	2
This 'n That	2
Membership Benefits	2
Computerized GED Practice Tests	3
Special Director News	3, 4
OAACE Awards & Scholarships	5
OAACE Board of Directors	6

Nominations Needed — OAACE Board of Directors

Due to term expirations, ten positions on the OAACE Board are up for election in 2004 – now is your chance to get involved with Ohio's oldest and largest professional organization for Adult and Continuing Education! OAACE members may nominate themselves or a colleague for a position on the Board. All nominees must be OAACE members by the nomination deadline and each position is elected to a two-year term, to commence July, 2004.

The current positions up for nomination are:

- Second Vice President
- Secretary
- Central Region Director
- Northeast Region Director
- Advocacy Director
- Basic Skills Director
- ESOL Director
- Family Literacy Director
- GED Director
- Workplace Director

The Nomination Form is available online at the OAACE website and includes links to the functions and responsibilities for each of these positions. The direct address is: http://www.oaace.org/nominate_1.html.

If you require a print copy, please contact Shirley Danley, OAACE Administrative Assistant or Marty Ropog, Nominations and Elections Chair. The deadline for nominations is January 28, 2004. For more information, call or email Marty Ropog, Nominations and Elections Chair at the Ohio Resource Center in Kent, Ohio at 330-672-2007. Or send email to mropog@literacy.kent.edu.

December Reminder!

Encourage my co-workers to join OAACE this month.

Happy 10th Anniversary to the Ohio Literacy Resource Center

Located in Kent, Ohio. The Resource Center began in 1993 to help coordinate local, regional and state level literacy services and to enhance the capacity of state and local organizations to provide literacy services. Find out more about the OLRC on their Web site at www.literacy.kent.edu.

This 'n That

OACCE Lapel Pins available



As a part of your OACCE membership, you get an OACCE pin.

If you do not already have your OACCE blue lapel pin, contact your Regional Director for information on how to get one.

Up-to-date Spring Conference Information

To keep up-to-date with the COABE Conference happening this Spring in Columbus, (hosted by OAAACE in April) visit the COABE Web site at www.coabe04.org.

Spring conference registration forms will be available online at www.oaace.org early in 2004.

Central/Southeast ABLEResource Center Hosts GED Accommodations Talk

On October 29, 2003, the Central/Southeast ABLEResource Center hosted presenters, Neil Sturomski, President of Sturomski & Associates and the GEDTS Consultant for GED Accommodations, and our own George Leach from the Ohio Department of Education for a professional development opportunity, "*GED Accommodations*".

In recent years, the GEDTS (the General Educational Development Testing Service) has worked diligently to develop ways to provide support for individuals with Learning Disabilities (LD) and Attention Deficit Hyperactivity Disorder (ADHD).

After being introduced by Joan Meyers, Mr. Sturomski discussed the accommodations available to an individual with LD, ADHD, and a physical or emotional disability. He also discussed, in detail, the process to follow in order to obtain special accommodations which included how to accurately complete the L-15 form for a Learning Disability or for ADHD and the SA-001 for a physical or emotional disability. During the day, he also shared some learning strategies to help students and he stressed the importance of using the accommodations requested in the learning situation to prepare the student for the GED test.

Joe, an LD identified GED graduate who attended the presentation, graciously shared his life, school, and GED testing experiences. He also shared the importance of practicing the accommodations in the classroom to prepare a student properly to take the GED with accommodations. Joe answered questions from the audience to help GED professionals better understand and assist their LD students.

At the end of the session, George Leach, from the Ohio GED office, reviewed the Ohio accommodation process and answered questions from the participants. George also discussed the accommodations that may be available to students without special documentation. It was stressed that the student must work with the local chief examiner, prior to the testing date, to determine what accommodations are available.



Neil Sturomski, left, president of Sturomskis & Associates and the GEDTS Consultant for GED Accommodations talks with

All Adult Basic and Literacy Education professionals were encouraged to make students aware of the GED accommodations available to them. It was also highly suggested that ABLEResource professionals discuss the process to acquire needed accommodations as soon as possible with the student, hopefully starting with orientation and assessment. All attendees were again encouraged to have the students use the accommodations in the classroom prior to their testing.

Member Benefits — News and Updates

Your OAAACE membership gives you access to a wide array of benefits. OAAACE has entered into discount agreements with:

- 3 rental car companies
- A family of 8 nationally known hotels
- A premier computer company.

As if these weren't enough, you can shop for medical, short-term, student, dental, and term life insurance through your association, too!

Go to www.oaace.org and click on "Benefits." You'll find everything you need to start saving money today.

OAACE Awards and Scholarships

Sharon Davis-Stubbe Awards

As we start out a New Year, please take time to think of about those you work with: a coworker, boss, tutor, or teacher. There are many talented and dedicated people working in adult education. This is your opportunity to let that special person or persons know how much you appreciate their contributions to adult education.

This spring at the COABE Conference (hosted by OAACE), four people throughout the state will be recognized for their outstanding work. This award is named in honor of Sharon Davis-Stubbe, who was a dedicated ABLE teacher and administrator in Ohio.

The categories are Teacher, Administrator, Support Staff, and Contributor. Nominators will complete a nomination form and include two to five support letters. The nomination form can be found on the OAACE website, at www.oaace.org. The deadline is March 1, 2004.

OAACE Scholarships

Once again four \$1000 scholarships will be awarded at the COABE Conference (April 24 – 28, 2004) in Columbus. Scholarship forms are available at the OAACE website at www.oaace.org. The deadline is March 1, 2003.

The scholarships are not cash awards, but may be used for tuition, books, and related supplies at any adult vocational or two-four year state certified college or university. The following scholarships will be awarded:

1. GED Scholarship - \$1000 awarded to one of the top 100 GED's in Ohio for 2003

Criteria –

- Ranked in the top 100 GED scores last year
- Resident of Ohio
- Enroll in post-secondary education or training within six months of receiving scholarship

2. Lifelong Learning Scholarship – \$1000 awarded to an adult returning for higher education

Criteria – (OAACE members are not eligible)

- Resident of Ohio
- Have a GED or high school diploma
- Currently enrolled or attended an adult education program within the last twelve months
- Will enroll in post-secondary education or training within six months of receiving scholarship

3. OAACE Member Scholarship - \$1000 awarded to an OAACE member

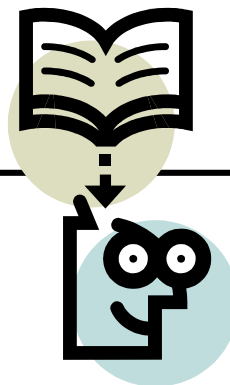
Criteria –

- Resident of Ohio
- Member of OAACE for at least one year
- Enroll in post-secondary education or training within six months of receiving scholarship

4. Max Way Scholarship - \$1000 awarded to an adult returning for higher education

Criteria -(OAACE members are not eligible)

- Resident of Athens, Gallia Hocking, Jackson, Lawrence, Meigs, Pickaway, Pike, Ross, Scioto, Vinton, or Washington county
- Attended an ABLE program in one of the above counties within the last twelve months
- Have a GED or high school diploma; will enroll in post-secondary education or training within six months of receiving scholarship



Ideas and articles for the OAACE Newsletter are always appreciated. Please submit your items to:

Patricia Faulhaber
OAACE Communications
Director
Canton City Schools
ABLE

1510 Clarendon Ave NW
Canton, OH 44708

Phone: 330-438-2559

Ext. 6

Fax: 330-454-6767

Email:
pfaulhaber@neo.rr.com



OAACE

PMB 103
1601 WEST FIFTH STREET
COLUMBUS, OH 43212

TO:

OAACE 2003-2004 Board of Directors

President: Linda Josefczyk
Switzerland of Ohio ABLE — Hannibal

1st Vice President: Alayne Payne
Licking County JVS — Newark

2nd Vice President: Sara Battison
Ashland County-West Holmes JVS — Ashland

Treasurer: Christine Burr
Penta Career Center 114 West Walnut — Oak Harbor

Secretary: Joan Freeman
Columbus State Community College — Columbus

Central Region Director: Al Carrelli
Licking County JVS — Newark

SE Region Director: Joe McGowan
The Plains

SW Region Director: Karen Hibbert
Tolles Technical Center — Plain City

NE Region Director: Shirley Kowalski
Mayfield City Schools ABLE and
Cleveland Hts./University Hts. ABLE
Chesterland

NW Region Director: Cindy Penza
Norwalk City Schools — Norwalk

Special Needs Director: Fran Holthaus
Upper Valley JVS — Sidney

Higher Education: Tara Narcross
Columbus State Community College
Columbus

ESOL Director: Denise Ploetz
Licking County JVS — Newark

Workplace Education Director:
Lili Roush
Gallia-Jackson-Vinton JVS — Rio Grande

Family Literacy Director: Barb Nourse
Northwest Even Start — McDermott

Advocacy Director: Mary Kern
Marietta City Schools — Marietta

Basic Skills Director: Leslie Farr
OSU Reach 1 — Columbus

GED Director: Paula Kertes
Cleveland Heights ABLE — Cleveland Hts

Governance: Cheryl Hagerty
Union County Commissioners — Marysville,

Adult Career & Technical Director: Sharon Halter
Ohio Hi-Point JVS — Bellefontaine

Community Agencies Director: Thelma Slater
Canton City Schools ABLE — Canton

Corrections Education Director: Denise Justice
Ohio Central School System

COABE Manager: Rick McIntosh
Project LEARN of Summit County — Akron

COABE Liaison: Karyn Evans
Southern State Community College — Hillsboro

Communications Chair: Patricia Faulhaber
Canton City Schools ABLE — Canton

**OLRC Liaison and
Nominations/Elections Chair:** Marty Ropog
Ohio Literacy Resource Center — Kent

ODE and RCN Liaison: Denise Pottmeyer
ODE — ABLE — Columbus

Ohio Literacy Network Liaison: Charley Flaig
Northwest ABLE — McDermott

Scholarships/Awards/Grant Chair: Gail Morgan
Tolls Technical Center—Plain City

OLN Liaison: Charley Flaig
Scioto County ABLE

OAACE Administrative Assistant

Shirley Danley
866-996-2223